

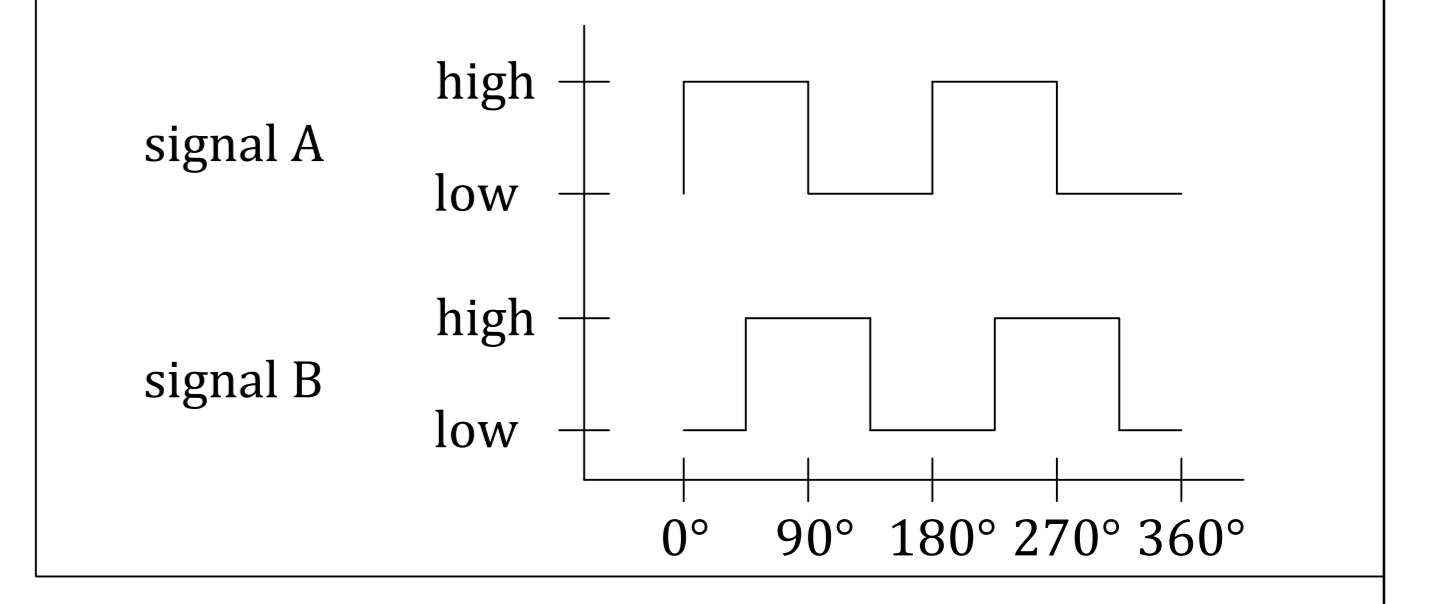
Slewing Drive Performance Parameters (Elevation)	
Rated Output Speed	0.05 rpm
Output Torque	2100 N.m
Tilting Moment	10 kN.m
Holding Torque	45 kN.m
Static Axial Rating	100 kN
Static Radial Rating	160 kN
Dynamic Axial Rating	50 kN
Dynamic Radial Rating	41 kN
Gear Ratio	60 : 1
Precision	≤ 0.17 °

24VDC Reducer Motor Performance Data (24H/30/100)	
Rated Current	≤3.6A
Rated Speed	3 rpm
Rated Output Torque	100 N.m
IP Class	IP 65

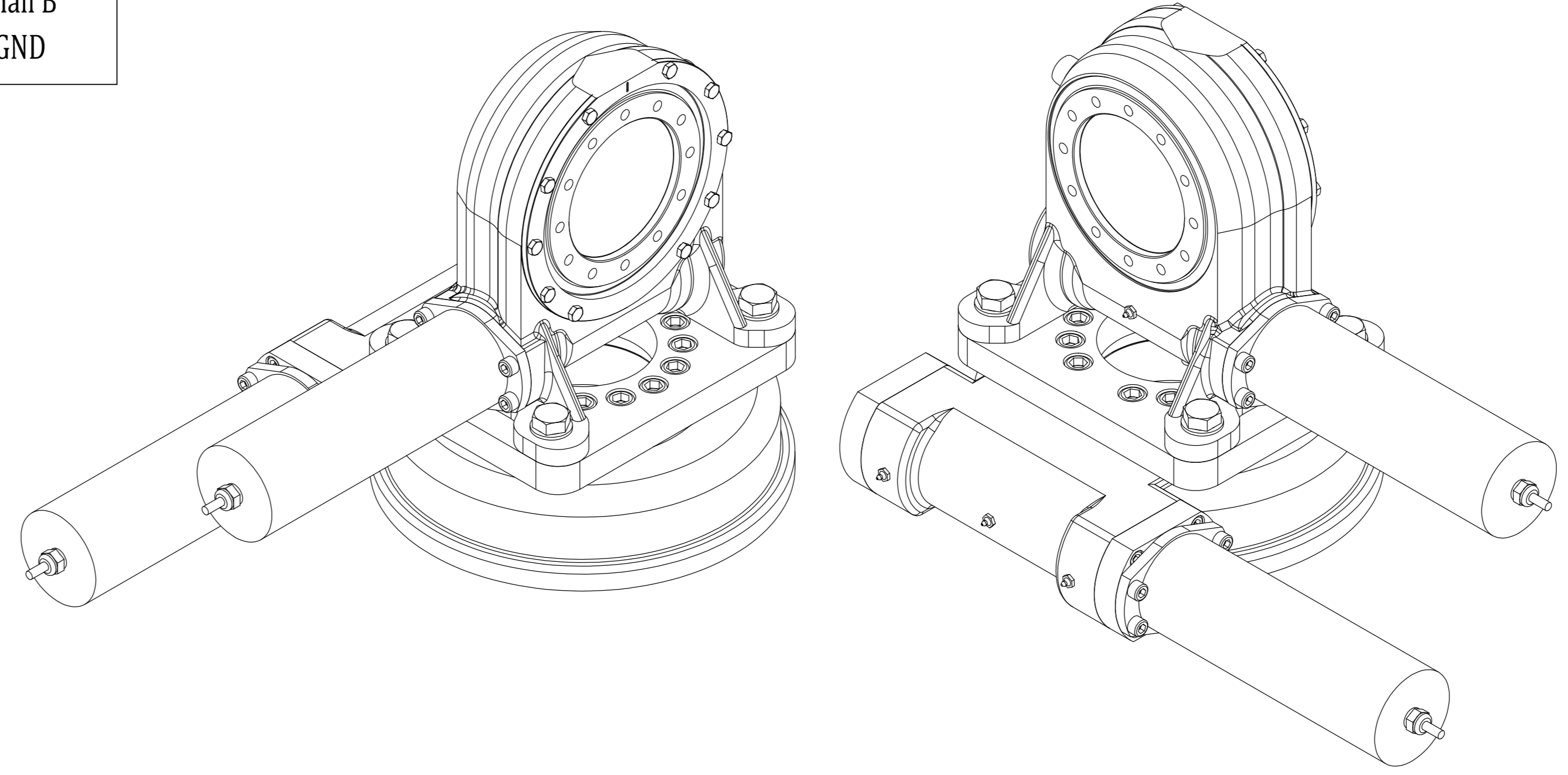
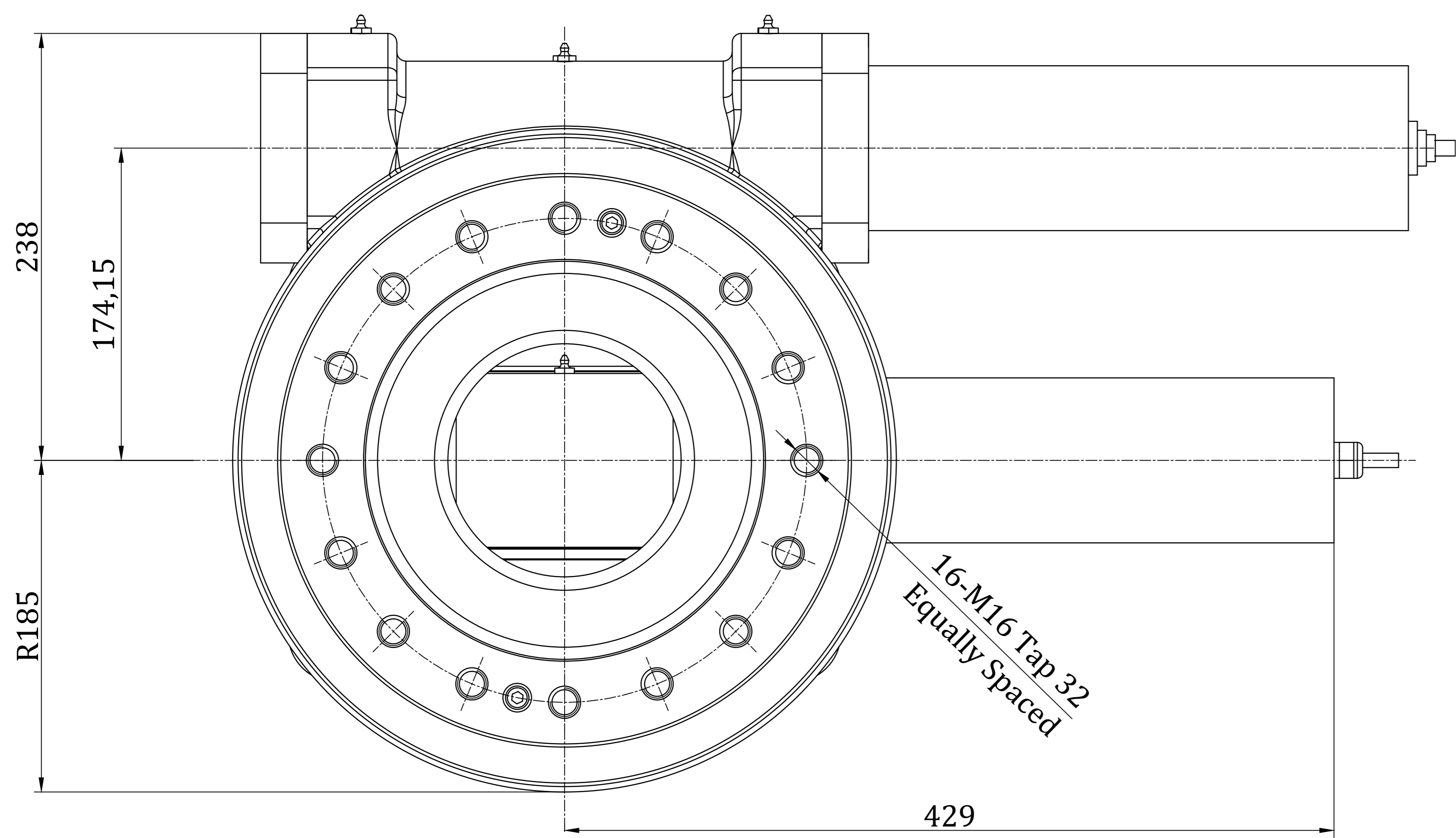
Slewing Drive Performance Parameters (Horizontal)	
Rated Output Speed	0.05 rpm
Output Torque	2440 N.m
Tilting Moment	33.9 kN.m
Holding Torque	38.7 kN.m
Static Axial Rating	338 kN
Static Radial Rating	135 kN
Dynamic Axial Rating	81 kN
Dynamic Radial Rating	71 kN
Gear Ratio	61 : 1
Precision	≤ 0.17 °

24VDC Reducer Motor Performance Data (24H/30/100)	
Rated Current	≤3.6A
Rated Speed	3 rpm
Rated Output Torque	100 N.m
IP Class	IP 65

MAGNETIC PULSE GENERATOR DATA		
Output type	-	voltage output
pull-up resistor	-	yes
Output signal	-	2 square wave signals
Phase quadrature	-	90 °
Impulses per revolution	ppr	2,channels A and B
Operating voltage	VDC	DC5-24
Operating current	mA	max. 12
Deviation of pulse width	-	max. 15 °
Deviation of phase shift	-	max. 15 °
Output voltage(low level)	VDC	max. 0.4 (20mA)
SIGNAL RISE TIME	ns	85
SIGNAL DECAY TIME	ns	60
Operation temperature	°C	-40 - +85



Wire Define		
Pin 1 (black)	motor -	
Pin 2 (red)	motor +	
Pin 3 (black thin)	hall -	
Pin 4 (red thin)	hall +	
Pin 5 (green)	hall A	
Pin 6 (yellow)	hall B	
Pin E (yellow green)	GND	



REV	DATE	REVISER
DESIGNED BY	2020/4/29	Li Ming
CHECKED BY	2020/4/29	Rui Wang
APPROVED BY	2020/4/29	Shane Zhang



REVISER
www.coresundrive.com
 Coresun Drive Equipment Changzhou Co.,Ltd.

ALL PROPRIETARY RIGHTS IN THE SUBJECT MATTER HERE OF ARE RESERVED, AND NO PERMISSION IS GRANTED OR TO DISCLOSE REPRODUCE THIS PRINT IN WHOLE OR IN PART, ANY OF THE INFORMATION TO OTHERS.

WEIGHT	SCALE
128 kg	1 : 5
SIZE	A3
SHEET	1 / 1

Slewing Drive
 SVH9-60S61-RC-24H30100
 REV A

SYMBOL	ISO